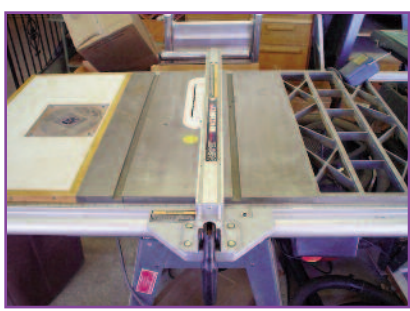
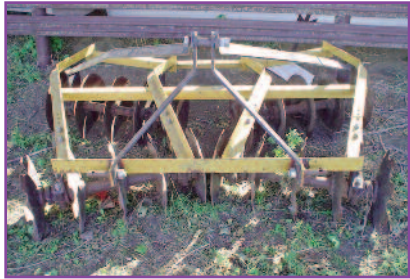


PUBLIC AUCTION

Sat., November 12, 2016

Starting Time: 10 a.m. CT

Auction Location: 4-H Building, N. Hwy. 25, Atwood, KS.

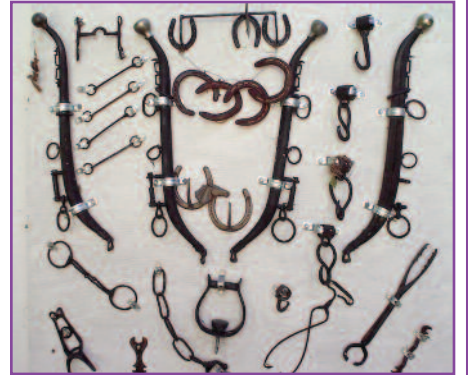


Lunch will be served.

Kawasaki Mule 610, 4WDR, Dump Box, 435 hours, Sharp
6'x16' Car Trailer, (steel floor)
5' Bush Hog
2-Bottom Plow
6'Disc
4'Harrow
6' Rear Blade
Manure Spreader
PU Box Trailer
Forney 180amp. Welder
Sears 2600watt Generator
Ridgid Air Compressor
Campbell Hausfeld Air Compressor, 2gal
Schumacher 200amp. Battery Charger
Craftsman Push Mower, (self-propelled)
Elect. Mower
Leaf Blower
Yard Machines 21" Snow Blower
Predator Weed Eater
Poulan Weed Eater
2-Weed Eaters
Troy-Bilt Rototiller, Rear Tine, Honda Engine
Viper MC 43 Rototiller
Wizard Rototiller
Stihl Chain Saw
B&D Elec. Chain Saw
Acetylene Torch w/Cart
Craftsman 6 1/8" Jointer-Planer
Craftsman 10" Planer
Fulton Hand Planers
Elect. Planer
Craftsman 12" Wood Lathe
Craftsman Buffer
Bench Grinder
Craftsman 10" Table Saw
Delta 10" Table Saw
Craftsman 12" Radial Arm Saw
Craftsman 12" Band Saw-Sander
Hole Saws
2-Skil Saws
2-Sawzalls
Coping Saw
2-Craftsman Belt Sanders
Duracraft Belt Sander
Delta Spindle Sander
Makita Orbital Sander
Lesson Sander (double sided)
Makita Sharpener
Router Bit Sharpener
Craftsman Drill Press
Packard Drill Press
Freud Plunge Router
2-Makita Drills
2-1/2" Drills
1/2" Air Impact
Air Chisel

Auctioneer Note:
The following personal property listed below is in excellent condition. This is just a partial listing of the items, so plan to attend.

- | | | |
|-----------------------|-------------------------------------|--------------------------------------|
| Brad Nailer | Paint Brushes | Maytag Refrigerator |
| Cordless Drills | Misc. Lumber | Kitchen Aid Washer & Dryer |
| Drill Doctor | Propane Heater | Kenmore Washer |
| Router Bits | Space Heater | Maytag Dryer |
| Lots of Drill Bits | Picnic Table | Kenmore Upright Freezer |
| B&D Dremel Tool | Patio Table | Wards Upright Freezer, (19.3 cu.ft.) |
| Elec. Red Lion | 2-Gas Grills | Wards Chest Freezer, (18 cu.ft.) |
| C-Clamps | Coolers | Philharmonic Piano |
| Bar Clamps | Smoker | Bar Stool |
| Quick Grip Clamps | Coleman Cook Stoves | Coffee Table |
| Wooden Clamps | Lawn Chairs | End Tables |
| Picture Frame Clamps | Lawn & Garden Tools | Old School Desk |
| Carbide Blades | Garden Hose | Cedar Chest |
| Dado Blades | Lawn Fertilizer | Wooden Box |
| Craftsman Socket Set | Garden Planter | Wooden File Cabinet |
| Box End Wrenches | Outdoor Christmas Decorations | Metal File Cabinet |
| Punches | Yard Ornaments | Office Desk |
| Screwdriver | Flower Pots | Hall Tree |
| Tin Snips | Larson 32"x 6' 8" Storm Door, (NIB) | Card Table |
| Crescent Wrenches | Wooden Door | Folding Chairs |
| Pipe Wrenches | Shingles | Lamps |
| Pipe Vise | Wagon w/Steel Wheels | Kirby Vacuum |
| 10" Vise | Steel Wheels | Carpet Shampooer |
| Bench Vise | Harness/Hames | Singer Sewing Machines |
| Craftsman Laser Level | Horse Collar | Ironing Board |
| Wooden Levels | Horse Bits | Dehydrator |
| Welding Helmet | Stirrups | Fans |
| Come-A-Longs | Single Trees | Clothes Hamper |
| Hammers | Sad Iron | Suit Cases |
| Nuts/Bolts/Screws | Tree Saws | Lifestyler Exerciser |
| Aluminum Ladders | Chicken Feeders | Knick-Knacks |
| Metal Cabinets | Wooden Crates | Bedding |
| Metal Shelves | Kg. sz. Bed | Lanterns |
| Aluminum Shelf | Queen Sz. Bed | Chimes |
| Metal Cart | 3-Full Sz. Beds w/Headboards | 2-Microwaves |
| Work Mate Table | Full Sz. Bed | 2-Toaster Ovens |
| B&D Work Bench | 4-Oak Dressers | Meat Grinder |
| Metal Saw Horses | Oak Chest of Drawers | Electric Slicer |
| Air Bubble | 4-Chests of Drawers | Food Processor |
| Handy-Man Jacks | Vanity Dresser | Pots & Pans |
| Jack Stands | Wardrobe | Porcelain Pans |
| Moving Cart | Couch | 1954 The Old Curiosity Shop Dish Set |
| 2-Shop Vacs | Sofa, (hide-a-bed) | Assort of Dishes |
| Wood Burning Stoves | Loveseat, (hide-a-bed) | Salt & Pepper Shakers |
| Wheel Barrow | 4-Recliners | Belt Buckle Collection |
| Water Cooler | Glider Rocker | Puzzles & Games |
| Kerosene Heater | Oak Rocker | Croquet Set |
| Scoop Shovels | Old Rocking Chair | Assort. of Books |
| Pitch Forks | China Hutches | Old Metal Toys |
| Log Chains | Oak Kitchen Table | License Plates |
| Propane Bottles | Kitchen Chairs | Toy Tractor collection |
| Zareba Fence Charger | Hoosier Oak Kitchen Cabinet Top | |
| Post Hole Digger | Round Top Tables | |
| Fence Stretchers | Wooden Cabinets | |
| T-Posts | | |
| Barbed wire | | |
| Hitch Pins | | |
| Pitch Forks | | |
| Gas Cans | | |
| 12v Sprayer | | |
| Ext. Cords | | |
| Car Ramps | | |
| 5th-Wheel Hitch | | |
| Shop Lights | | |
| Assort. of Paint | | |
| Paint Supplies | | |



Sellers: Walter R. Chipperfield Estate & Jerry & Jo Harris

Visit our website for additional pictures: www.gladrealestate.com

Glad Real Estate

415 State • P.O. Box 173 • Atwood, KS 67730

For details, contact:

Rocky Hayes - Auctioneer

Office: 785-626-2039 • Cell: 785-626-4022

Terms: Cash day of sale. Not responsible for accidents. Announcements made day of sale shall take precedence over printed material.

Persons not personally known by the auction firm must have a letter of credit from their banking institution.